

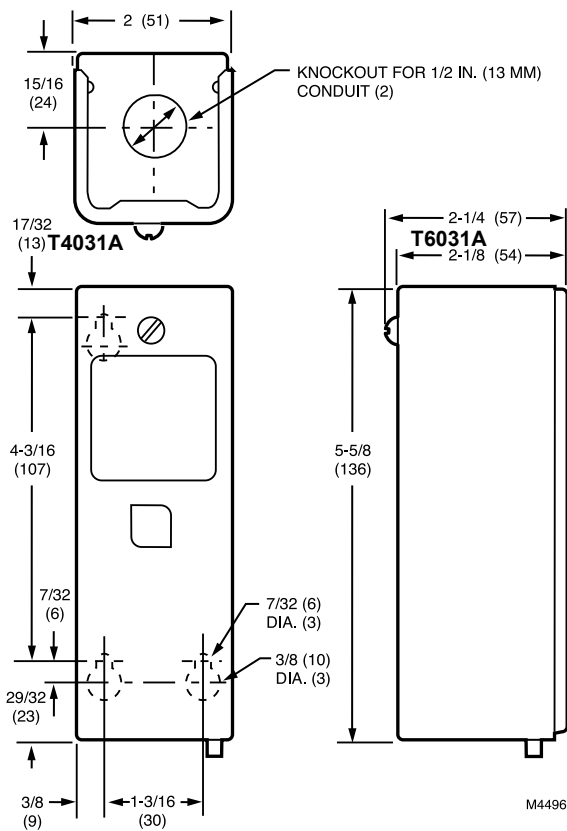
T4031A; T6031A Refrigeration Temperature Controller



Provide limit or temperature control in refrigerated areas where remote mounting of sensing element is required.

- Liquid-filled copper elements provide rapid sensing to control the compressor system.
- Control temperature in a duct, tank, freezer or cooler.
- Controller element can be directly immersed in the controlled medium.
- Adjustable control setpoint.
- Ambient temperature compensation provides good temperature control.
- Refer to T775 Electronic Remote Temperature Controller where more exact control is required and/or remote controller location is preferred.

Dimensions in inches (millimeters)



Application: Provides control of cooled or refrigerated space

Type: Remote bulb

Sensor Element: Copper bulb

Bulb Size: 3/8 in. diameter x 3 in. long (10 mm diameter x 76 mm long)

Maximum Operating Temperature: 125 F (52 C)

Voltage: 120 Vac; 240 Vac

Contact Ratings (120 Vac): 8.0 AFL, 48.0 ALR

Contact Ratings (240 Vac): 5.1 AFL, 30.6 ALR

Approvals:

Canadian Standards Association: Certified: File No. LR95329-1

Underwriters Laboratories Inc. File: SA481, Guide: SDFY

Product Number	Setting Temperature Range		Differential Temperature		Switching	Capillary Length		Comments
	(F)	(C)	(F)	(C)		(ft)	(m)	
T4031A1073	-30 F to +50 F	—	3.5 F	—	1 SPST	8 ft.	2.44 m	—
T6031A1011	15 F to 90 F	—	3.5 F to 16 F	—	1 SPDT	5 ft	1.5 m	—
• T6031A1029	-30 F to +90 F	—	3.5 F to 16 F	—	1 SPDT	8 ft.	2.4 m	—
T6031A1052	-30 F to +90 F	—	3.5 F to 16 F	—	1 SPDT	5 ft	1.5 m	—
T6031A1060	-30 F to +90 F	—	3.5 F to 16 F	—	1 SPDT	20 ft.	6.1 m	—
T6031A1086	—	-35 C to +30 C	—	1.9 C to 8.9 C	1 SPDT	8 ft.	2.4 m	Celsius model
T6031A1136	-30 F to +90 F	—	3.5 F to 16 F	—	1 SPDT	8 ft.	2.4 m	—

* TRADELINE models • SUPER TRADELINE models