

## Type 1379 Duragauge® Pressure Gauge with PLUS!™ Performance Option



- 4½" full-size Bourdon tube
- Patented Duratube™ with as-welded-tube construction controls stress for longer life
- "Round Cap Tip" construction lowers stresses for longer life
- Micrometer adjustable pointer.
- Exclusive Teflon coated 400 series stainless steel rotary movement for longer life
- PLUS!™ Performance Option:
  - Liquid-filled performance in a dry gauge
  - Fights vibration and pulsations without liquid-filled headaches
  - Order as option XLL
- Epoxy-coated system for superior corrosion resistance

Type 1379 Duragauge® pressure gauge is offered in 4½", 6" and 8½" dial sizes. This rugged, solid-front aluminum case gauge is tops in its field. It is available as a weather-proof hermetically sealed or liquid-filled version in 4½" and 6" sizes in pressures to 30,000 psi. Like the 1279, it can be easily field converted from the weatherproof version to either the sealed or liquid-filled version using an optional kit. Ranges 50,000, 80,000 and 100,000 psi are available in 6" hermetically sealed and liquid-filled cases. All cases are coated with black epoxy which will withstand most environmental conditions.

### PRODUCT SPECIFICATIONS

- Model Number:** 1379
- Accuracy:** ½% full scale (Grade 2A, ASME B40.100)
- Ranges:** Vacuum – 100,000 psi
- Dial Size:** 4½", 6", 8½" diameter
- Case Material:** Black, aluminum, solid front
- Weather Protection:** Dry Case: IP54  
Liquid filled or hermetically sealed case: IP 65
- Ring:** Threaded reinforced black polypropylene
- Window:** Glass
- Dial:** Aluminum, white background, black pressure scale.
- Bourdon Tube and Socket:** C510 Phos. bronze/brass brazed (A)  
316L SS/steel (R)  
316L SS/316L SS (S)  
K Monel/ Monel (P)  
Inconel 718 (WW)

- Pointer:** Micrometer adjustable
- Movement:** Rotary, 400 SS, Teflon® coated pinion gear and segment
- Connection Size:** ¼", ½" NPT, ¼" high pressure
- Connection Location:** Lower or back

### PRODUCT OPTIONS

- PLUS! Performance:** XLL
- Fill:** L-Glycerin-Standard  
XGV-Silicone-Optional  
XGX-Halocarbon-Optional
- Hermetic Seal:** H
- Flush Mounting Ring:** X56
- Surface Mounting Bracket:** XBF
- Flush Mounting Bracket:** XBQ
- Receiver Gauge:** XPR
- Shatter Proof Glass Window:** XSG
- Acrylic Window:** XPD
- Set Hand:** XSH
- Maximum Pointer:** XEP

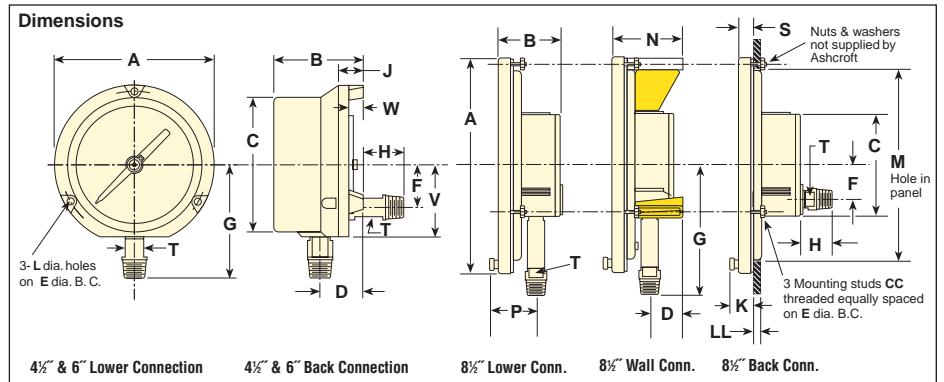
### STANDARD RANGE TABLE\*

Pressure – psi				
Range	Figure Interval	Minor Graduation		
0/15	1	0.1		
0/30	5	0.2		
0/60	5	0.5		
0/100	10	1		
0/160	20	2		
0/200	20	2		
0/300	50	2		
0/400	50	5		
0/600	50	5		
0/800	100	10		
0/1000	100	10		
0/1500	200	20		
0/2000	200	20		
0/3000	500	20		
0/5000	500	50		
0/6000	500	50		
0/10,000	1000	100		
0/20,000	2000	200		
0/30,000	5000	200		
0/50,000	5000	500		
0/80,000	10,000	1000		
0/100,000	10,000	1000		
Compound				
Range	Figure Interval		Minor Grads	
	in Hg	psi	in Hg	psi
30" Hg/15 psi	5	3	0.5	0.2
30" Hg/30 psi	10	5	1	0.5
30" Hg/60 psi	10	10	1	1
30" Hg/100 psi	10	10	2	1
30" Hg/150 psi	10	20	5	2
30" Hg/200 psi	30	20	5	2
30" Hg/300 psi	30	50	5	2
Vacuum				
Range	Figure Interval	Minor Grads		
30/0 in. Hg	5 in	0.2 in		
34/0 ft H <sub>2</sub> O	5 ft	0.5 ft		

\*Full standard and metric equivalent range table available on our web site.

**ISO 9001**  
REGISTERED FIRM

## Type 1379 Duragauge® Pressure Gauge with PLUS!™ Performance Option



Dial Size Inches	A	B	C	D	E	F	G	H	J	K	L	M	P	S	T	V	CC	LL	Wgt (lbs)
4 1/2	5 1/16 (148)	3 1/16 (86)	4/8 (124)	1/8 (41)	5/8 (137)	1 1/2 (42)	3 1/16 (100)	7/8 (20)	1 1/16 (27)	—	.218 (6)	—	2 1/8 (54)	—	5/16 (16)	2 3/8 (67)	—	—	2 1/2
6	7 3/16 (192)	3 1/2 (89)	6 3/8 (162)	1/8 (41)	7 (178)	1 1/2 (42)	4 1/2 (114)	7/8 (20)	1 1/16 (27)	—	.218 (6)	—	2 1/8 (54)	—	5/16 (16)	2 3/8 (67)	—	—	3 1/4
8 1/2	10 1/16 (256)	2 7/8 (73)	4 3/4 (121)	1 1/16 (27)	9 5/8 (244)	1 5/8 (41)	6 (152)	1 3/8 (35)	—	1 1/16 (27)	—	9 (228)	—	1 1/16 (17)	—	—	#10-24	3/8 (13)	4 1/2

**Table A - Case selection & mounting**

Dial Size (in)	Ordering Code	Case Type	Case: Material Finish	Ring: Style Material Finish	Mounting / Connection
4 1/2, 6, 8 1/2	(45), (60), (85)	1379 (1)	Aluminum, Black epoxy coating	4 1/2, 6" Threaded reinforced polypropylene 8 1/2" Black wrinkle enamel coat	Stem - Lower or back Surface - Lower or back Flush - Back, specify X56 8 1/2" Standard

**Table B - Bourdon System Selection**

Bourdon Tube & Tip Material <sup>(2)</sup> (all joints TIG welded except code "A")	Socket Material <sup>(2)</sup>	Tube & Socket Code	Case Style Code	NPT Conn. & Code	Conn. Location & Code	Range Selection Limits (psi)
C510 Grade A Phosphor Bronze Tube, Brass Tip, Silver Braze	Brass	(A)	(S) Solid Front	(04) 1/2	Lower (L) Back (B)	Vac./1000
316 stainless steel	1018 steel	(R)	(S) Solid Front	(02) 1/4		Vac./20,000
316 stainless steel	316 SS	(S)	(S) Solid Front	(OPT)		Vac./20,000
K 500 Monel <sup>(3)</sup>	Monel 400	(P)	(S) Solid Front			Vac./30,000
Inconel 718 <sup>®</sup>	316 SS	(WW)	(SH) Solid Front Herm. Sealed	(09) 1/4 High Pres.		50,000/80,000/100,000

**Notes:**

- (1) Liquid-fillable or hermetically sealed when kit 101A202-01 (lower) or kit 101A203-01 (back) is ordered.
- (2) For selection of the correct Bourdon system material see the media application table.
- (3) Use on applications where NACE MR-01-75 is specified for selection of the correct Bourdon system material.

**HOW TO ORDER:**

45    1379    RS\*    04L    XXX    0/2,000 psi

From Table A, Dial Size: 4 1/2" : \_\_\_\_\_

From Table A, Case Type Number: 1379 \_\_\_\_\_

From Table B, Bourdon tube and socket: \_\_\_\_\_

From Table B, Connection: 1/4 NPT (02), 1/2 NPT (04), Lower (L), Back (B) \_\_\_\_\_

From Optional Features: \_\_\_\_\_

From Range Table: 2000 psi \_\_\_\_\_

(\*) "S" denotes solid front case design